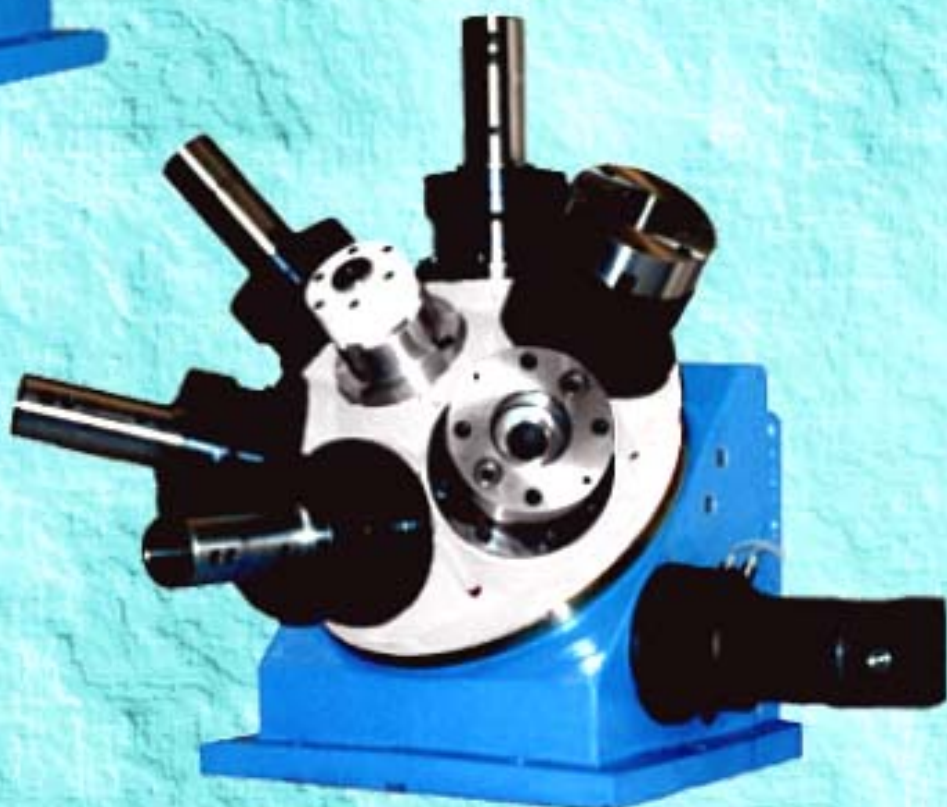




**SO.TE.CO.**



**SO.TE.CO.** è un'azienda organizzata per rispondere prontamente alle esigenze dei propri clienti con tecnologie innovative e all'avanguardia. Presente sul mercato da più di 25 anni SO.TE.CO. ha costantemente migliorato la qualità dei suoi prodotti ottenendo la certificazione ISO 9002 per offrire al cliente serietà e competenza.

**SO.TE.CO.** is a company whose purpose is to meet promptly customer's requirements with innovative and advanced technologies. It is more than 25 years that SO.TE.CO. is present on the market and it has constantly improved the quality of its products. With the ISO 9002 certification we guaranty reliability and competence .

La soluzione migliore  
The best solution

**SO.TE.CO.** srl via Saronno,127 21042 Caronno Pertusella (VA) ITALIA  
tel.0296451005 fax 0296450998 e-mail:soteco@tiscalinet.it

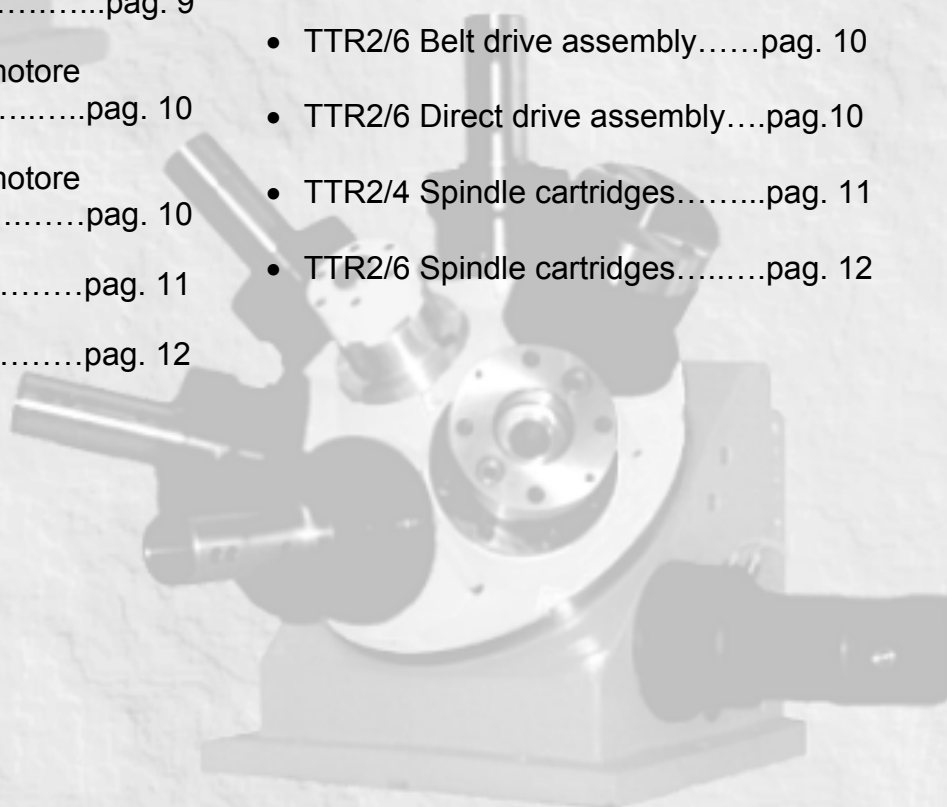


## INDICE

- Caratteristiche testa a revolver 4-6 mandrini.....pag. 1
- Descrizione.....pag. 2
- Testa a revolver TTR2/4.....pag. 3
- TTR2/4 con unità a slitta.....pag. 5
- Assemblaggio TTR2/4 con motore rinviato.....pag. 6
- Assemblaggio TTR2/4 con motore diretto.....pag. 6
- Testa a revolver TTR2/6.....pag. 7
- TTR2/6 con unità a slitta.....pag. 9
- Assemblaggio TTR2/6 con motore rinviato.....pag. 10
- Assemblaggio TTR2/6 con motore diretto.....pag. 10
- Gamma mandrini TTR2/4.....pag. 11
- Gamma mandrini TTR2/6.....pag. 12

## INDEX

- Revolving turret head with 4-6 spindles features.....pag. 1
- Description .....pag. 2
- TTR2/4 Revolving turret head ....pag. 3
- TTR2/4 with slide unit.....pag. 5
- TTR2/4 Belt drive assembly.....pag. 6
- TTR2/4 Direct drive assembly.....pag. 6
- TTR2/6 Revolving turret head ....pag. 7
- TTR2/6 with slide unit.....pag. 9
- TTR2/6 Belt drive assembly.....pag. 10
- TTR2/6 Direct drive assembly.....pag. 10
- TTR2/4 Spindle cartridges.....pag. 11
- TTR2/6 Spindle cartridges.....pag. 12



**CARATTERISTICHE  
TESTA A REVOLVER  
4-6 MANDRINI**

Lavorazioni di foratura, barenatura, alesatura, maschiatura e fresatura

•  
Mandrini intercambiabili

•  
Versione standard con cuscinetti a rulli conici e sede per 28 DIN 6327

•  
N° giri versione standard: 3500 max

•  
Opzione principale con cuscinetti a sfere a contatto obliquo: giri 5000 max

•  
Altre versioni a richiesta

•  
Possibilità di montare teste a mandrini multipli

•  
Potenza massima mandrino 4 Kw a 3000 giri

•  
Tempo di rotazione di 90°: 1”

•  
Indexaggio e bloccaggio su dentatura frontale Hirth.

•  
Bloccaggio idraulico

•  
Rotazione torretta con camma cilindrica comandata da motore idraulico

•  
Distributore centrale per refrigerante

•  
Utilizzabile con mandrino sia orizzontale che verticale

DISPONIBILE IN DIVERSE VERSIONI:

Torretta con motore e slitta

•  
Torretta con motore

•  
Torretta senza motore

**REVOLVING TURRET HEAD  
WITH 4-6 SPINDLES  
FEATURES**

Drilling, boaring, reaming, threading, milling

•  
The spindles are interchangeable

•  
Standard version with tapered roller bearings and spindle 28 DIN 6327

•  
Spindle speed of the standard version max 3500 rpm

•  
Option with angular contact ball bearing: spindle speed max 5000 rpm

•  
On request other different versions

•  
Possibility to mount multi-spindle-head

•  
Max motor power of spindles: 4 Kw at 3000 rpm

•  
Indexing time (90°) – 1”

•  
Indexing and locking on Hirth type face gear

•  
Locking hydraulically operated

•  
Rotation by means of cylindrical cam, operated by hydraulic motor

•  
Central distributor for coolant

•  
The revolving head can be used for vertical and horizontal machining direction

AVAILABLE:

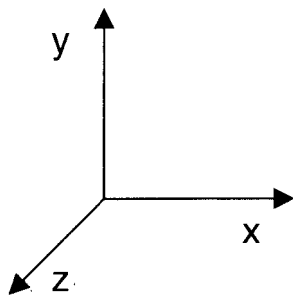
Complete system with motor and slide

•  
Turret head only with motor

•  
Turret head only without motor

**DESCRIZIONE**

I sistemi a torretta girevole SO.TE.CO. costituiscono una soluzione molto versatile per produrre a basso costo. Le torrette girevoli TTR2 possono essere fornite singolarmente per equipaggiare macchine a controllo numerico, oppure complete di slitte a controllo con asse x-xy-xyz.

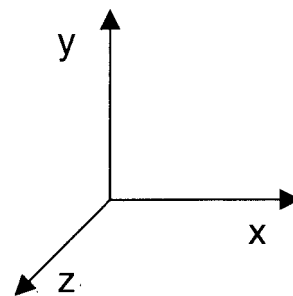


La rotazione, che può essere indifferentemente oraria o antioraria, avviene tramite una camma cilindrica a profilo sinusoidale movimentata da un motore oleodinamico. Il bloccaggio in fase di lavoro e la precisione angolare sono garantiti dalla terna di corone dentate tipo HIRTH. L'accoppiamento del mandrino con il motore elettrico è assicurato dall'innesto di una bussola scanalata mossa da un sistema di leverismi.

Peso revolver: 85 Kg

**DESCRIPTION**

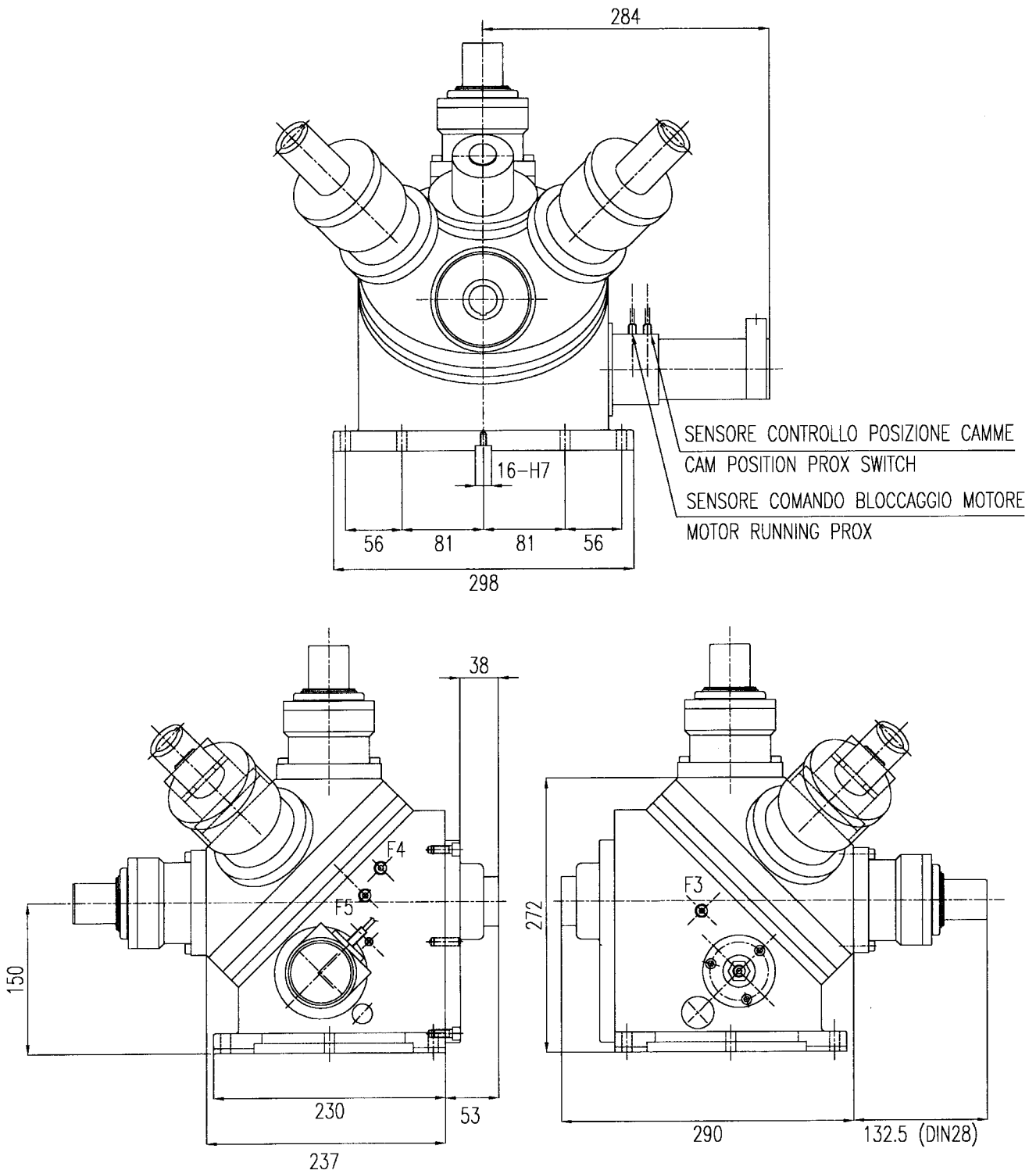
The SO.TE.CO. turret machining systems are versatile solution to low cost production. The TTR2 turret heads are available separately for CNC machines, or complete with controlled axis (x-xy-xyz) slide units.



The rotation, indifferently clockwise or anticlockwise, is caused by a cylindrical cam with sinusoidal form moved by an oil-hydraulic motor. An HIRTH type tern of crown gears assured the holding and the angular precision. The coupling of the spindle with the electric motor is given by the clutch of a grooved bushing moved by a lever system.

Revolving head weight: 85 Kg

**TESTA A REVOLVER TTR2/4  
TTR2/4 REVOLVING TURRET HEAD**

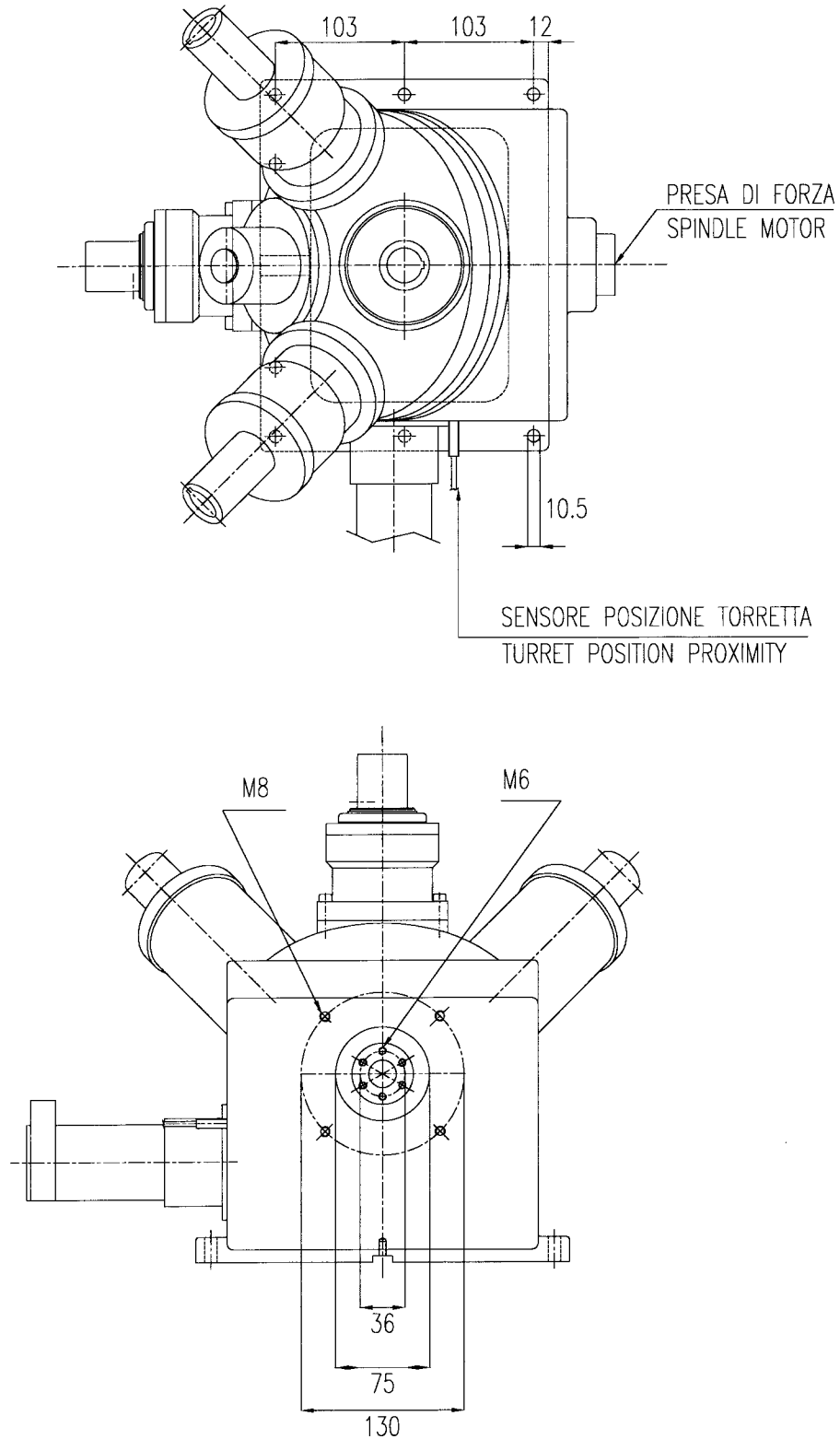


F3 = FORO 1/4" GAS ATTACCO REFRIGERANTE – 1/4" NPT COOLANT THROUGH TOOL

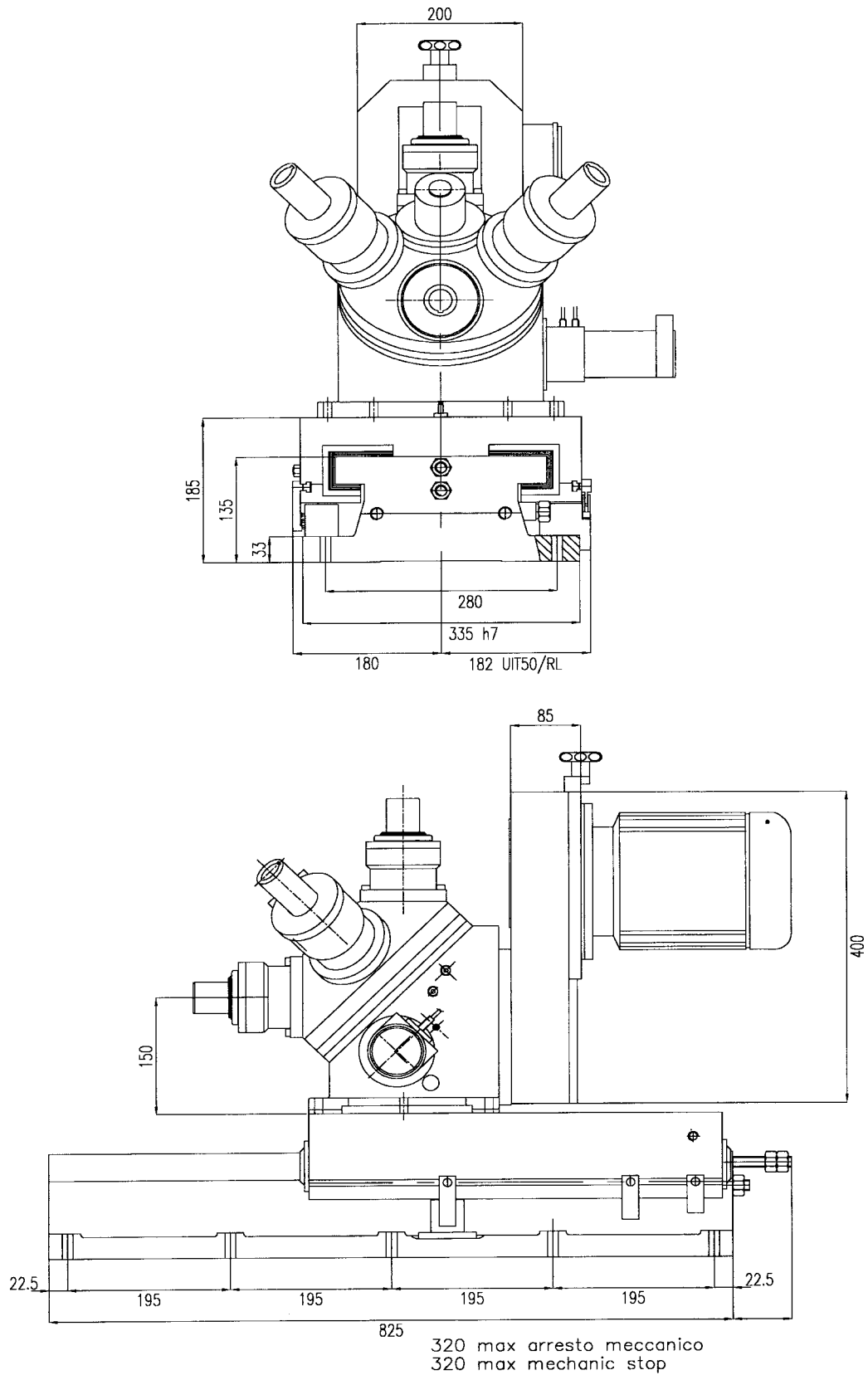
F4 = FORO 1/4" GAS ATTACCO SBLOCCAGGIO PNEUMATICO TORRETTA – 1/4" NPT PNEUMATIC UNLOCK TURRET

F5 = FORO 1/4" GAS ATTACCO BLOCCAGGIO IDRAULICO TORRETTA – 1/4" NPT HYDRAULIC LOCK TURRET

**TESTA A REVOLVER TTR2/4  
TTR2/4 REVOLVING TURRET HEAD**

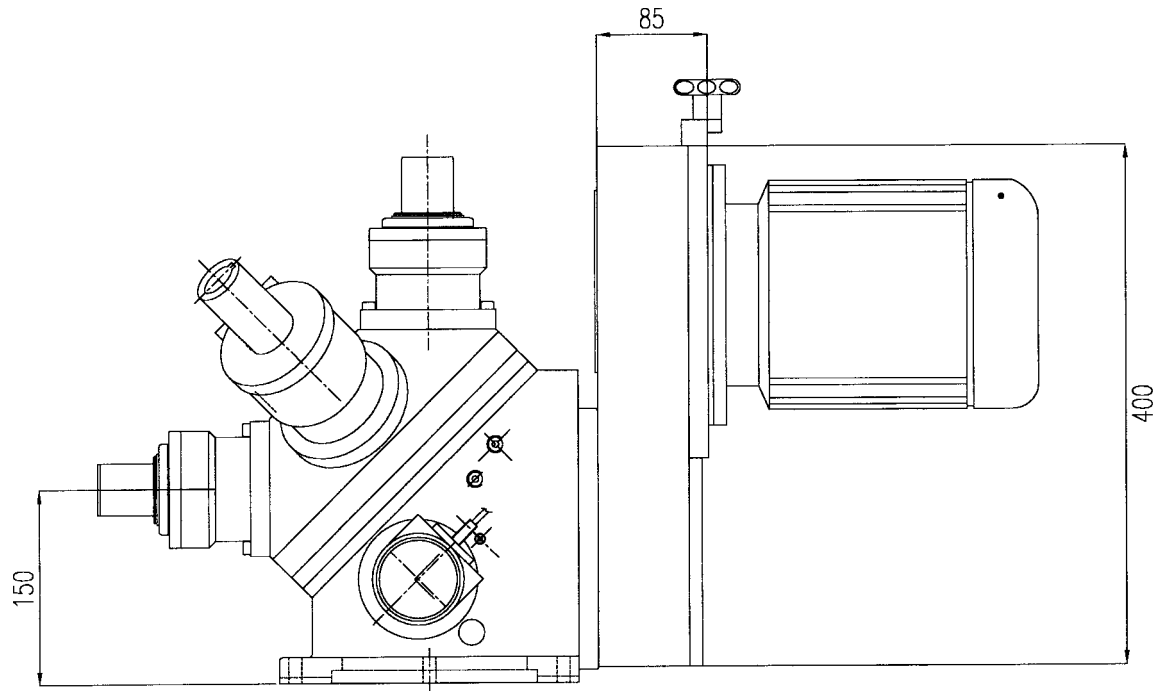


**TTR2/4 CON UNITA' A SLITTA**  
**TTR2/4 WITH SLIDE UNIT**

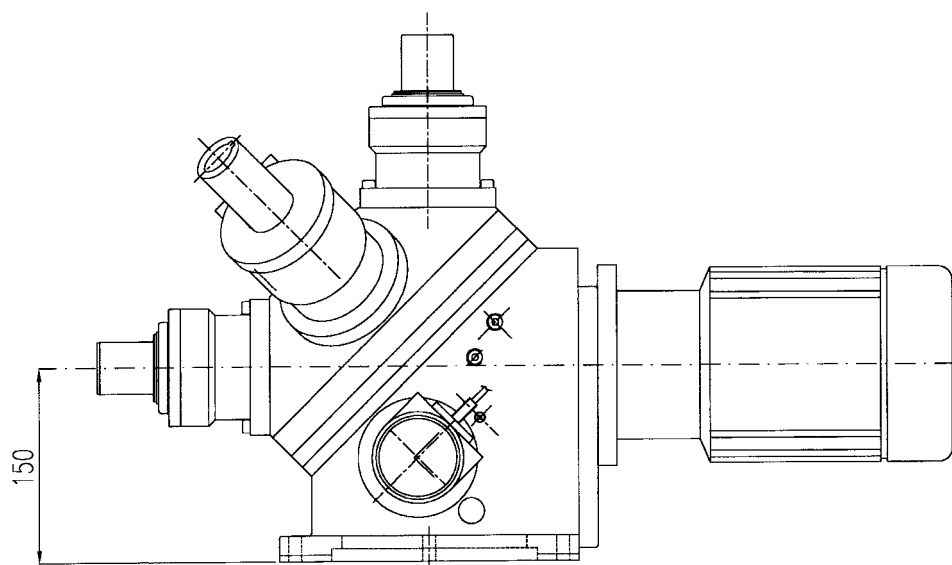




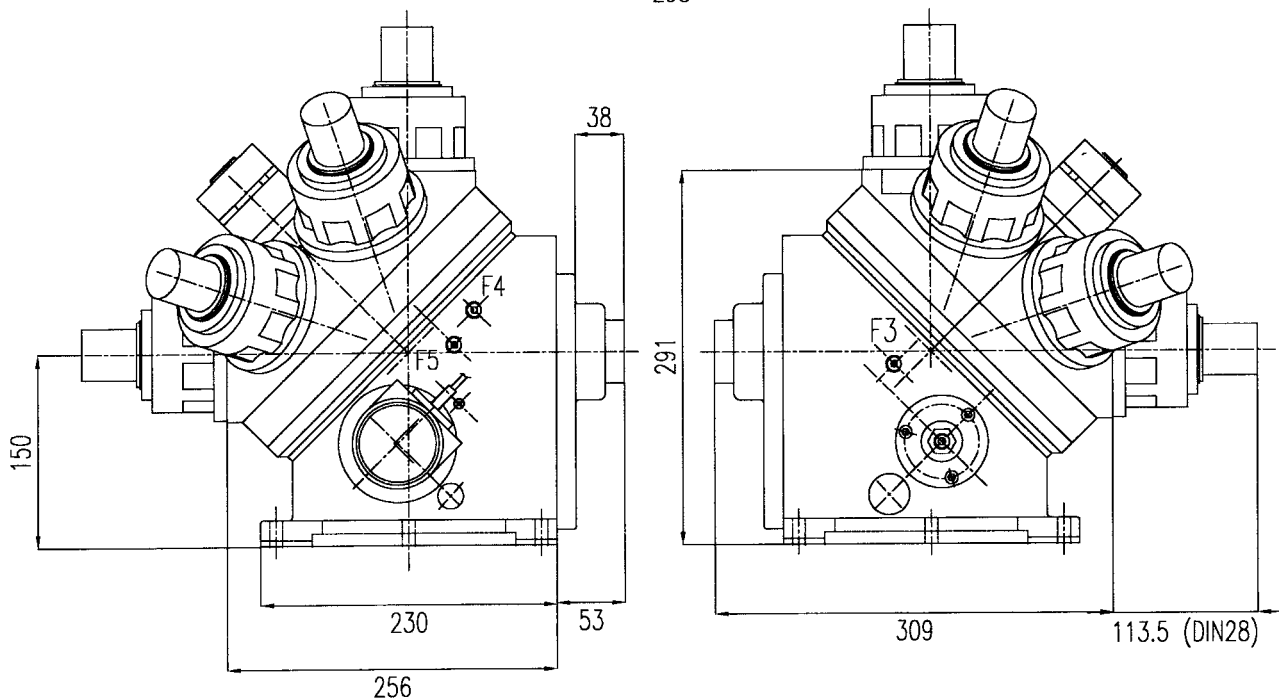
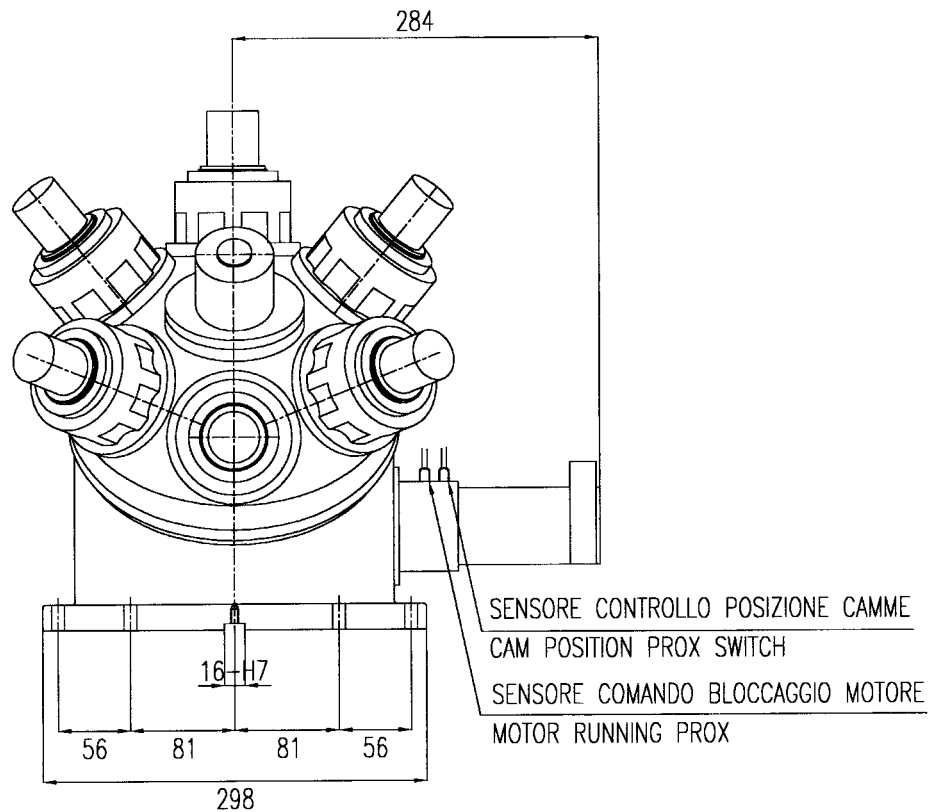
**ASSEMBLAGGIO TTR2/4 CON MOTORE RINVIATO**  
**TTR2/4 BELT DRIVE ASSEMBLY**



**ASSEMBLAGGIO TTR2/4 CON MOTORE DIRETTO**  
**TTR2/4 DIRECT DRIVE ASSEMBLY**



**TESTA A REVOLVER TTR2/6  
TTR2/6 REVOLVING TURRET HEAD**

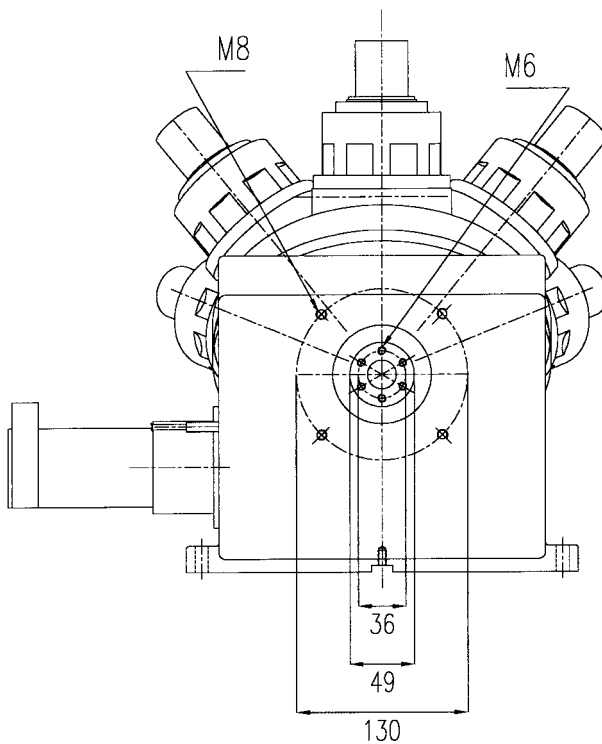
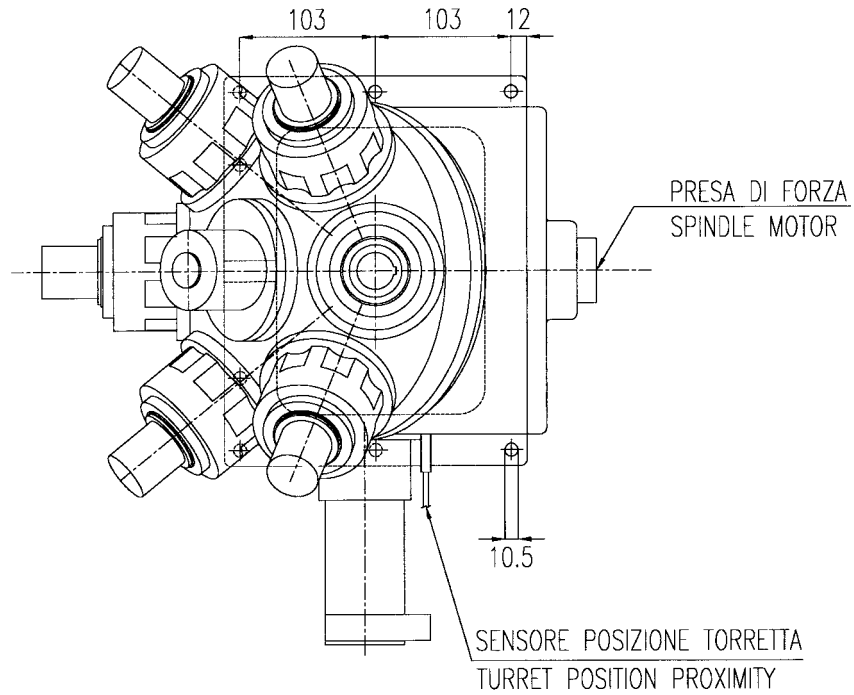


F3 = FORO 1/4" GAS ATTACCO REFRIGERANTE – 1/4" NPT COOLANT THROUGH TOOL

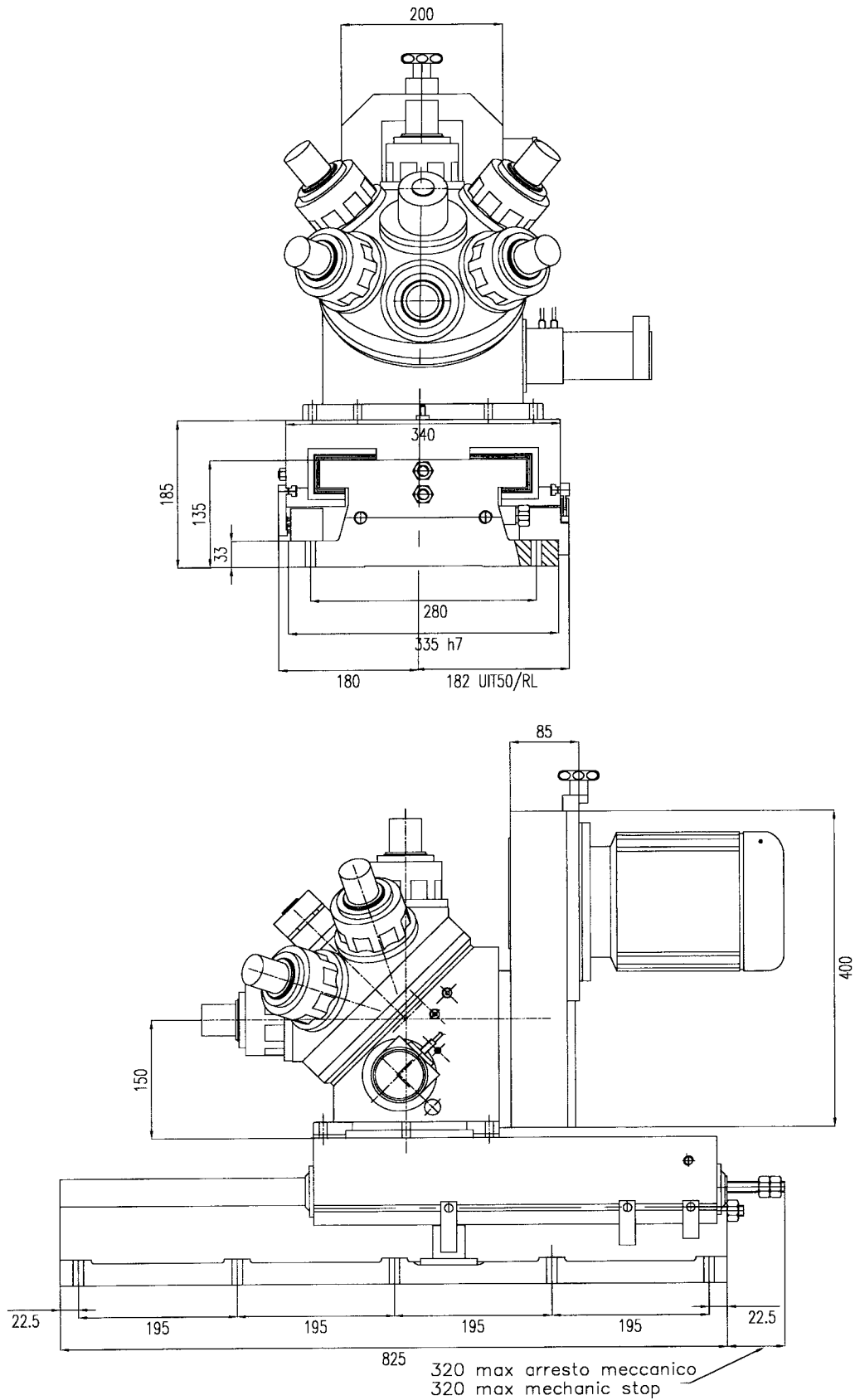
F4 = FORO 1/4" GAS ATTACCO SBLOCCAGGIO PNEUMATICO TORRETTA – 1/4" NPT PNEUMATIC UNLOCK TURRET

F5 = FORO 1/4" GAS ATTACCO BLOCCAGGIO IDRAULICO TORRETTA – 1/4" NPT HYDRAULIC LOCK TURRET

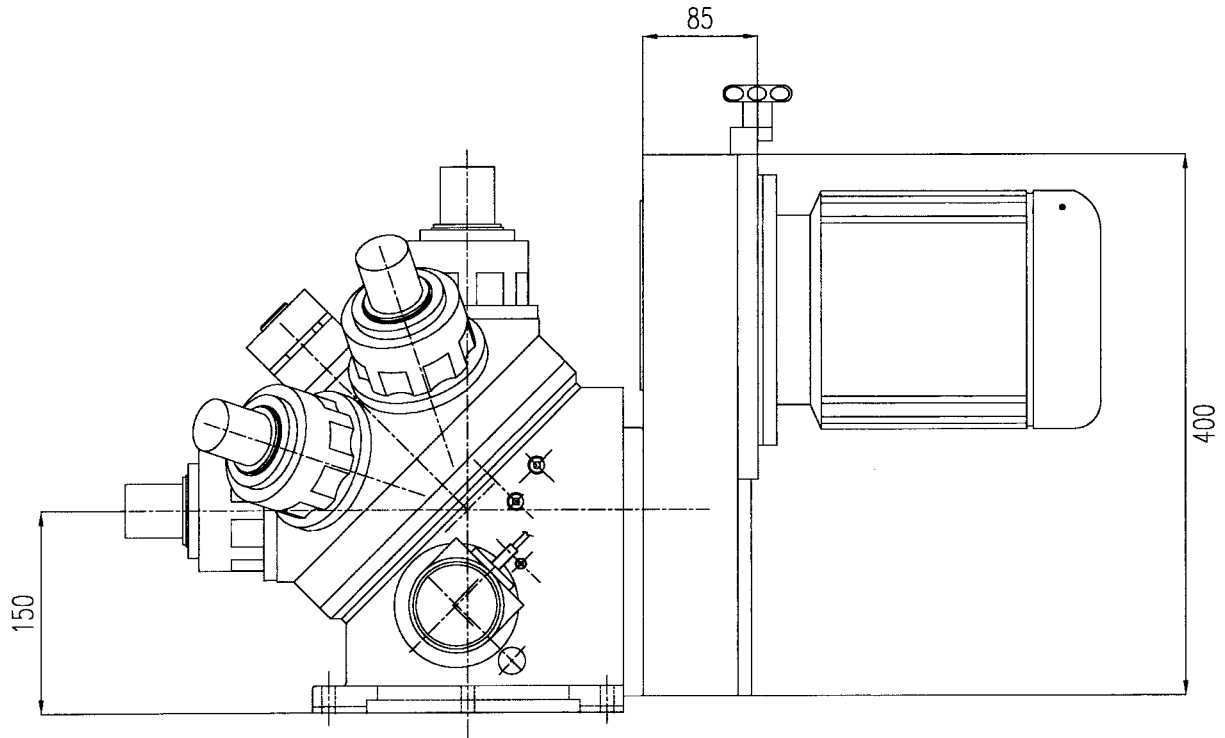
**TESTA A REVOLVER TTR2/6**  
**TTR2/6 REVOLVING TURRET HEAD**



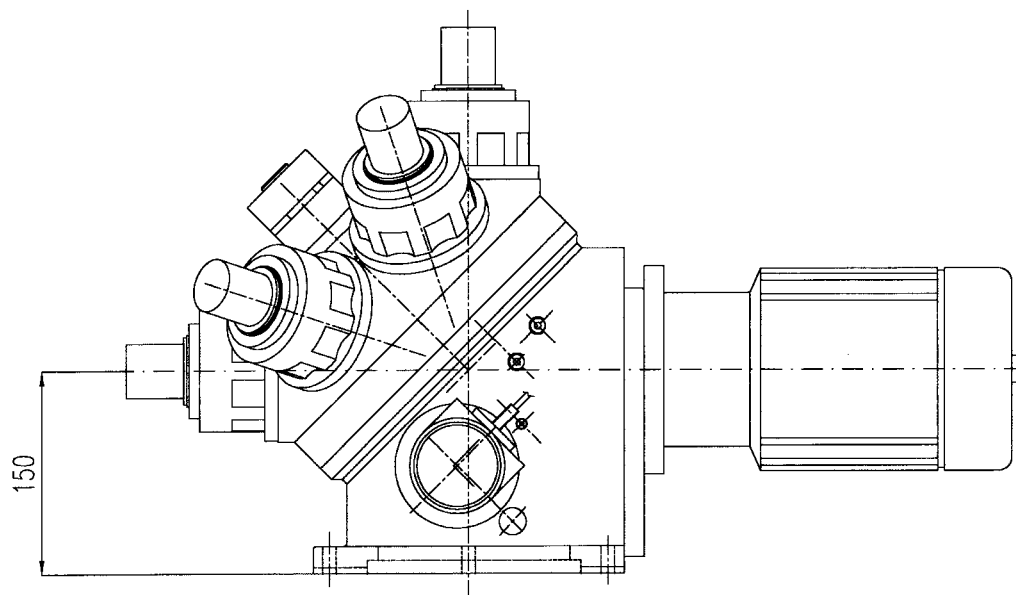
**TTR2/6 CON UNITA' A SLITTA**  
**TTR2/6 WITH SLIDE UNIT**



**ASSEMBLAGGIO TTR2/6 CON MOTORE RINVIATO**  
**TTR2/6 BELT DRIVE ASSEMBLY**



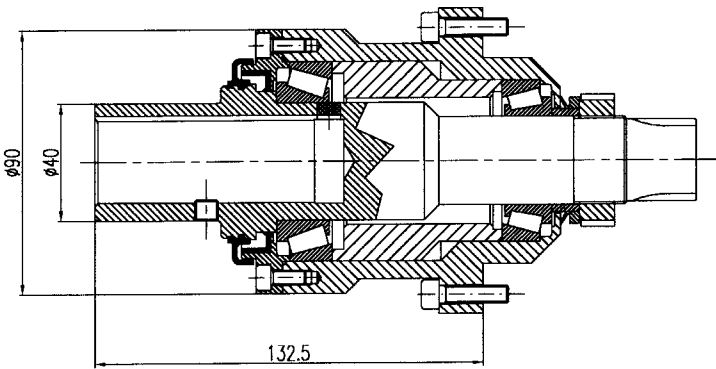
**ASSEMBLAGGIO TTR2/6 CON MOTORE DIRETTO**  
**TTR2/6 DIRECT DRIVE ASSEMBLY**



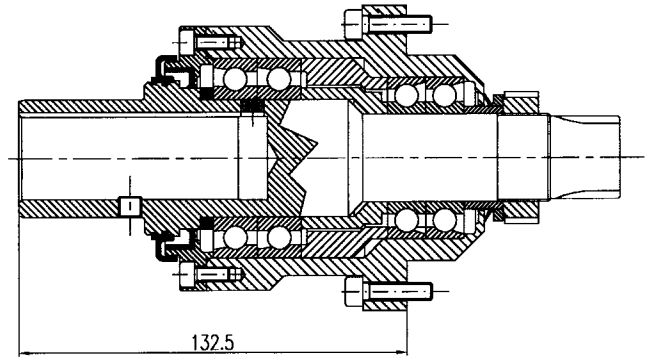


**GAMMA MANDRINI TTR2/4  
TTR2/4 SPINDLE CARTRIDGES**

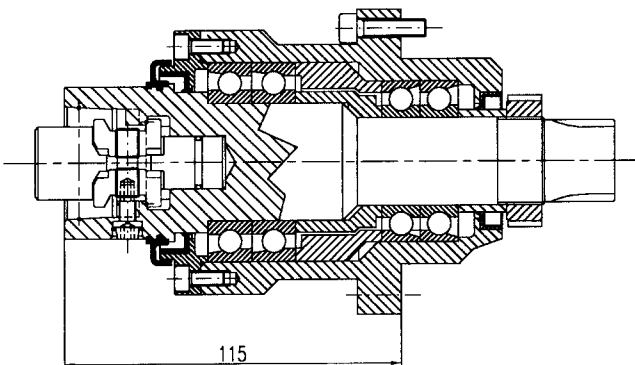
ATTACCO DIN 28  
SPINDLE CARTRIDGE DIN 28



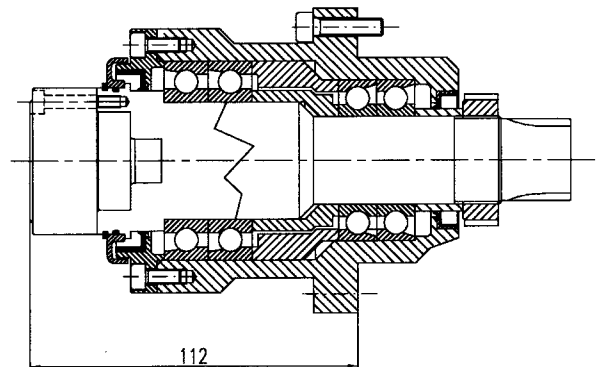
ATTACCO DIN 28  
SPINDLE CARTRIDGE DIN 28



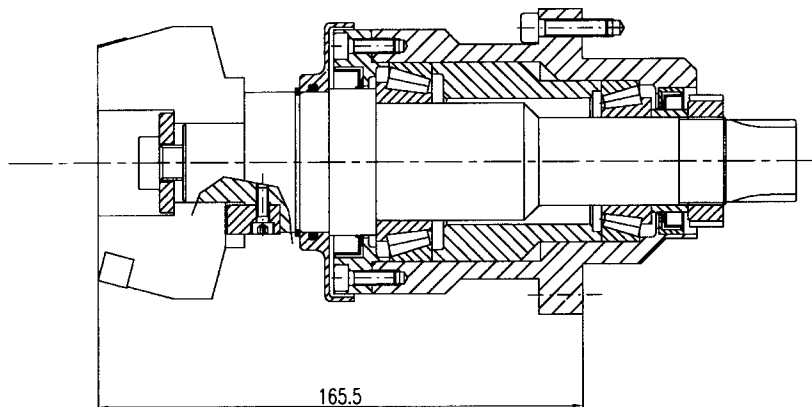
MANDRINO HSK – C50  
SPINDLE CARTRIDGE HSK-C50



MANDRINO HSK – C40  
SPINDLE CARTRIDGE HSK-C40

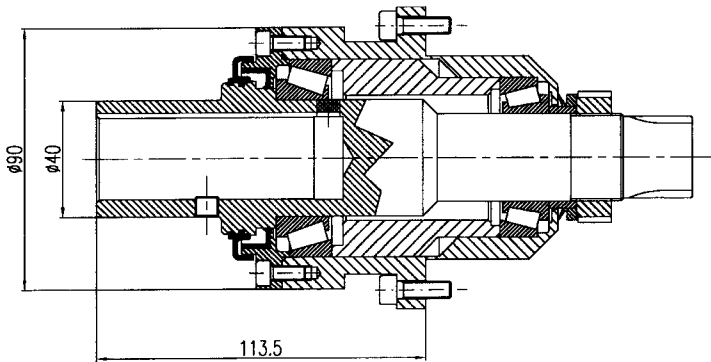


MANDRINO PORTAFRESE  
MILLING SPINDLE CARTRIDGE

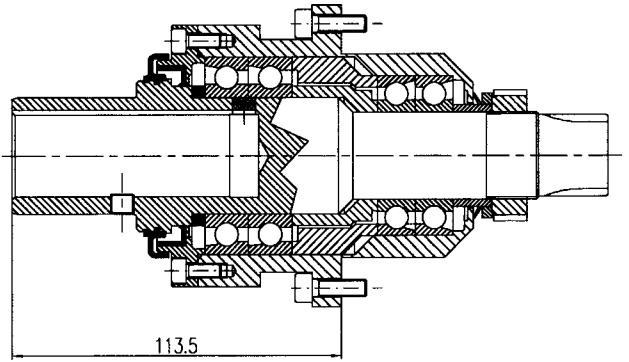


**GAMMA MANDRINI TTR2/6**  
**TTR2/6 SPINDLE CARTRIDGES**

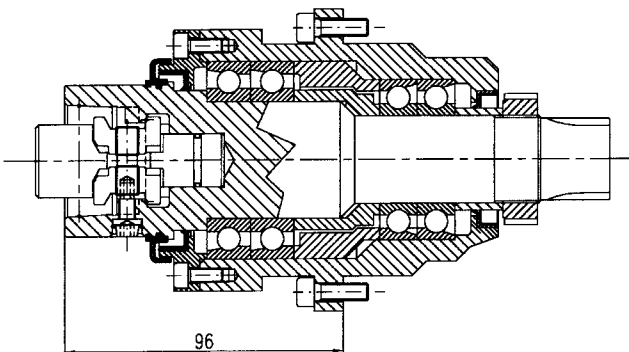
ATTACCO DIN 28  
SPINDLE CARTRIDGE DIN 28



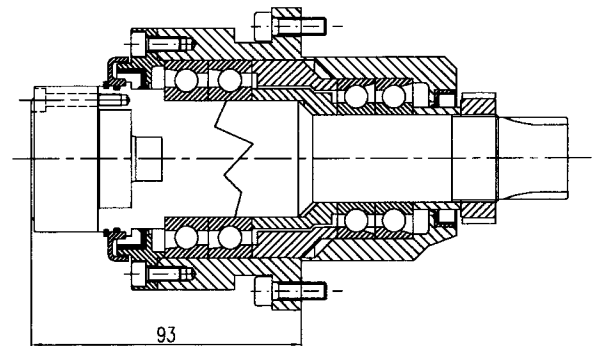
ATTACCO DIN 28  
SPINDLE CARTRIDGE DIN 28



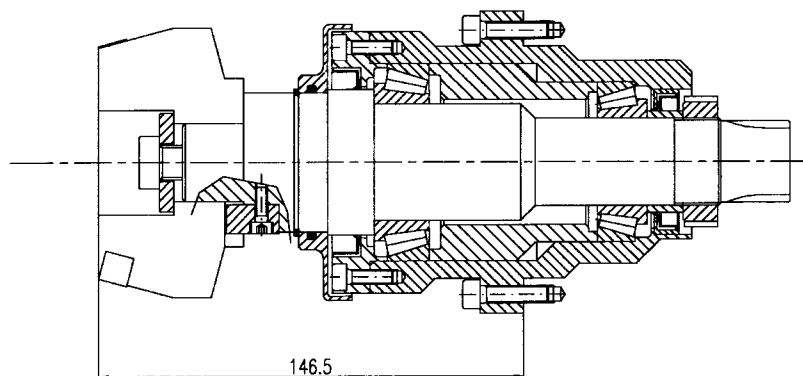
MANDRINO HSK – C50  
SPINDLE CARTRIDGE HSK-C50



MANDRINO HSK – C40  
SPINDLE CARTRIDGE HSK-C40



MANDRINO PORTAFRESE  
MILLING SPINDLE CARTRIDGE



## ALTRI PRODOTTI OTHER PRODUCTS

Torni a CNC con fantina mobile  
Sliding headstock CNC lathe

•

Macchine transfer  
Transfer machines

•

Tavole rotanti meccaniche – pneumatiche - idrauliche  
Mechanical – pneumatical - hydraulical rotary indexing tables

•

Unità di foratura oleodinamiche e pneumatiche  
Drilling units hydraulically and pneumatically operated

•

Unità di maschiatura  
Tapping units

•

Unità di fresatura  
Milling units

•

Slitte di traslazione oleodinamiche, pneumatiche ed a CN  
Slides hydraulically, pneumatically and NC operated

•

Teste multiple  
Multi-spindle heads

•

Morse autocentranti  
Selfcentering chucks

•

Valvole pneumatiche  
Pneumatic valves

E' vietata l'utilizzazione e la riproduzione,anche parziale, del presente catalogo  
senza autorizzazione scritta della **SO.TE.CO.**

Per un'evoluzione tecnologica del prodotto,tutte le modifiche e i miglioramenti  
possono essere apportati in qualsiasi momento e senza preavviso

The total or partial use or reproduction of this catalogue is forbidden without  
the written consent of **SO.TE.CO.**

We reserve the right to modify products at any time and without prior notice  
as part of our policy of constant improvement.

